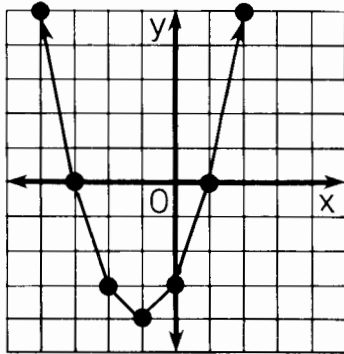
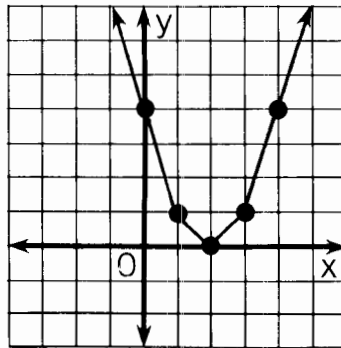


How Can You Help Control Soil Erosion?

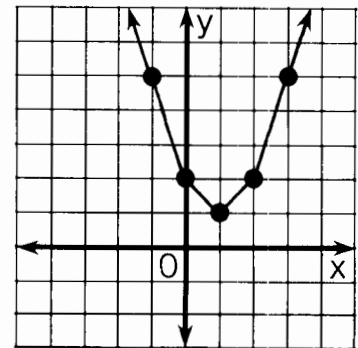
Use the related graph or the discriminant of each equation to determine how many real-number solutions it has. Circle the letter of the correct choice and write this letter in the box containing the exercise number.



- ① $x^2 + 2x - 3 = 0$
 (D) two solutions
 (E) one solution
 (M) no solutions



- ② $x^2 - 4x + 4 = 0$
 (C) two solutions
 (A) one solution
 (W) no solutions



- ③ $x^2 - 2x + 2 = 0$
 (H) two solutions
 (D) one solution
 (O) no solutions

	two solutions	one solution	no solutions							
④ $x^2 + 5x + 4 = 0$	K	B	G							
⑤ $x^2 - 3x = 2$	U	O	A							
⑥ $y^2 + 10y + 25 = 0$	V	A	I							
⑦ $2x^2 = 4x - 3$	F	C	H							
⑧ $4x^2 + 9 = 12x$	S	P	N							
⑨ $-3n^2 + 5n - 2 = 0$	N	R	S							
⑩ $\frac{1}{2}x^2 + 3x + 8 = 0$	R	P	L							
⑪ $\frac{1}{3}t^2 + 3 = 2t$	Y	B	T							
7	3	10	1	5	8	2	11	6	9	4

OBJECTIVE 4-f: To use the related graph or the discriminant of a equation to determine how many real-number solutions it has.